

The Bell III

Elevation A

3 Bedroom/2 Bath



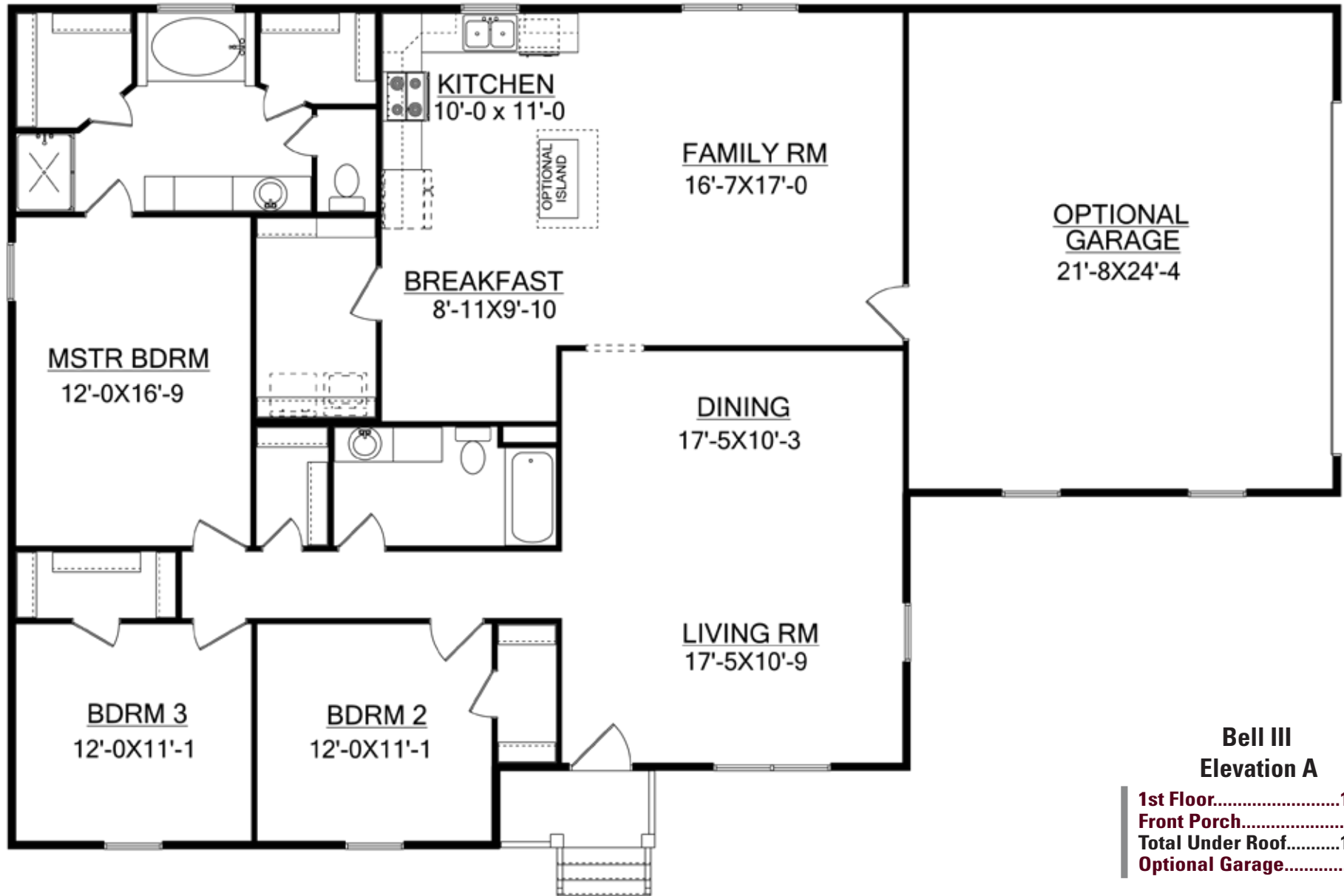
1-800-NewHouse

| AmericasHomePlace.com

© 2011 America's Home Place, Inc. Any information shown in this ad is subject to change at anytime. Illustrations show options and upgrades not included in base plan. Specifications vary by location. Home designs represented on this page are property of America's Home Place and are intended for demonstration purposes only. Any unauthorized duplication, copying or reproduction, or any other use, is strictly prohibited. FL #CR-C057203 Revised 05/03/11



First Floor



Bell III Elevation A

1st Floor	1894
Front Porch	32
Total Under Roof	1926
Optional Garage	550

The Bell III

Elevation B

3 Bedroom/2 Bath

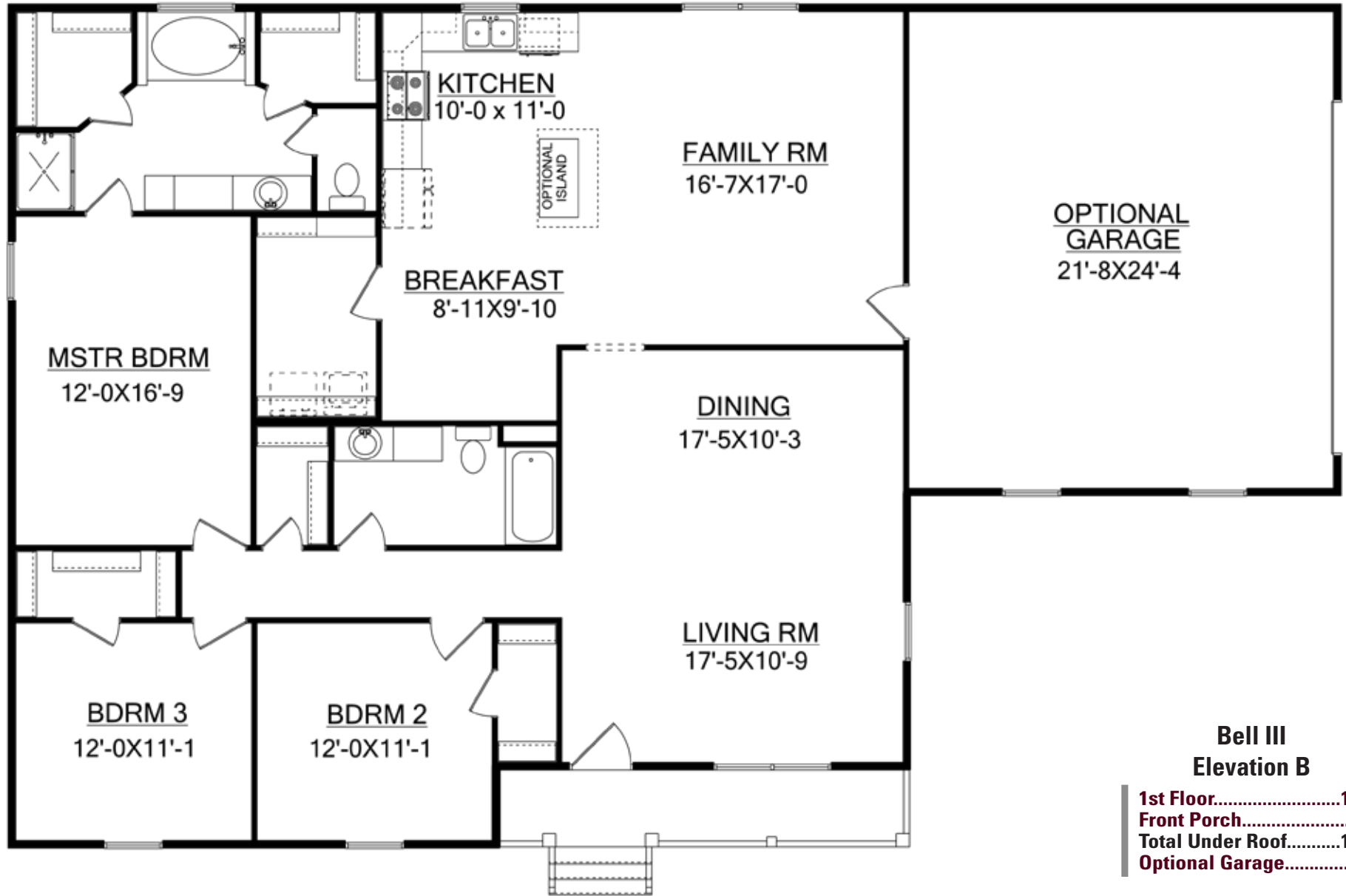


1-800-NewHouse | AmericasHomePlace.com

© 2011 America's Home Place, Inc. Any information shown in this ad is subject to change at anytime. Illustrations show options and upgrades not included in base plan. Specifications vary by location. Home designs represented on this page are property of America's Home Place and are intended for demonstration purposes only. Any unauthorized duplication, copying or reproduction, or any other use, is strictly prohibited. FL #CR-C057203 Revised 05/03/11



First Floor



Bell III Elevation B

1st Floor.....	1894
Front Porch.....	84
Total Under Roof.....	1978
Optional Garage.....	550

The Bell III

Elevation D

3 Bedroom/2 Bath

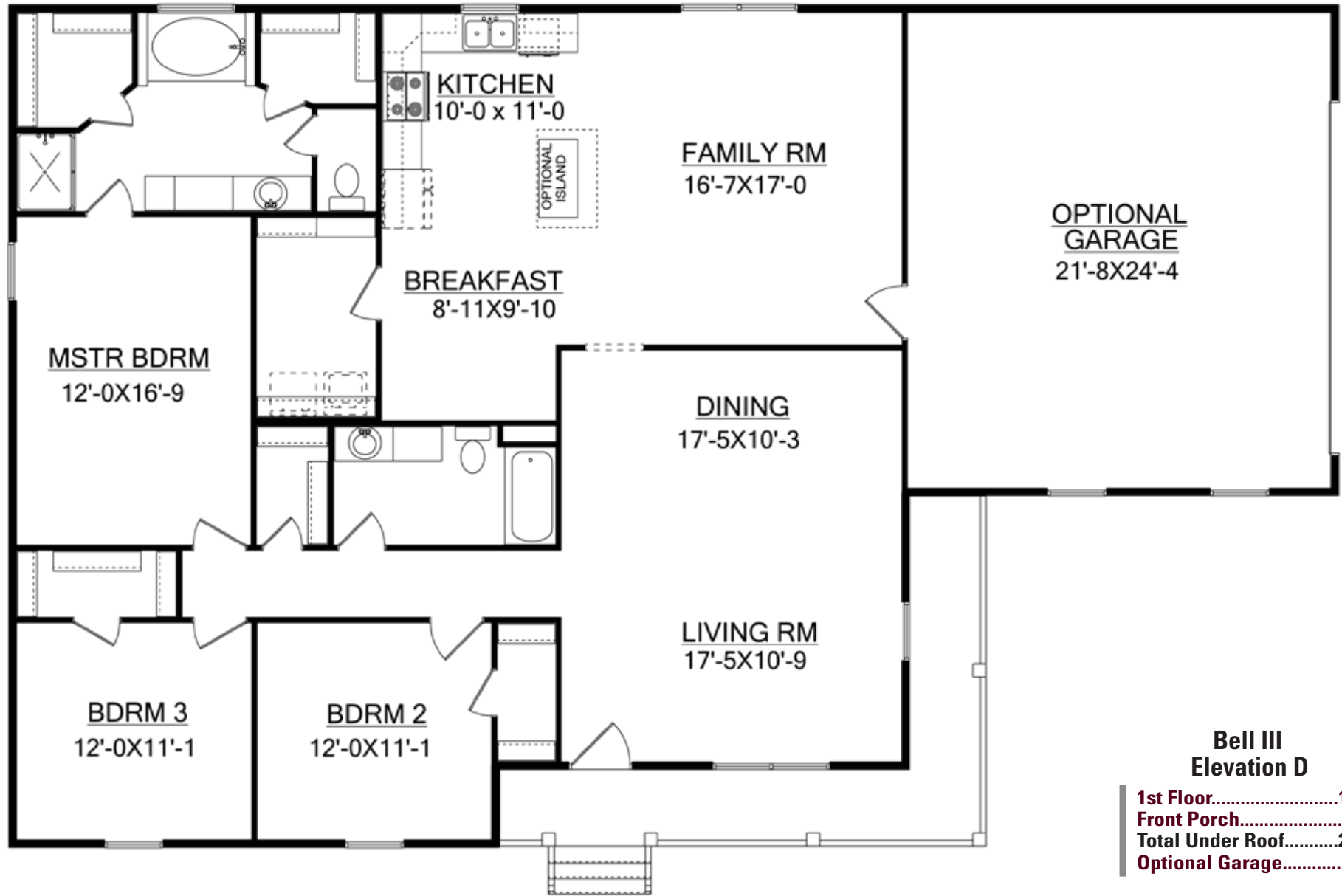


1-800-NewHouse | AmericasHomePlace.com

© 2011 America's Home Place, Inc. Any information shown in this ad is subject to change at anytime. Illustrations show options and upgrades not included in base plan. Specifications vary by location. Home designs represented on this page are property of America's Home Place and are intended for demonstration purposes only. Any unauthorized duplication, copying or reproduction, or any other use, is strictly prohibited. FL #CR-C057203 Revised 05/03/11



First Floor



Bell III Elevation D

1st Floor	1894
Front Porch	156
Total Under Roof	2050
Optional Garage	550